



OFFERS IN EXCESS OF

£850,000

Buchan Road

London, SE15 3HQ

**GARETH
JAMES**

PROPERTY SUMMARY

Find an end-of-terrace home with timeless Victorian charm with this beautifully presented three-bedroom home, offering generous proportions, a substantial garden, and exciting potential for further enhancement on one of Nunhead's most desirable roads.

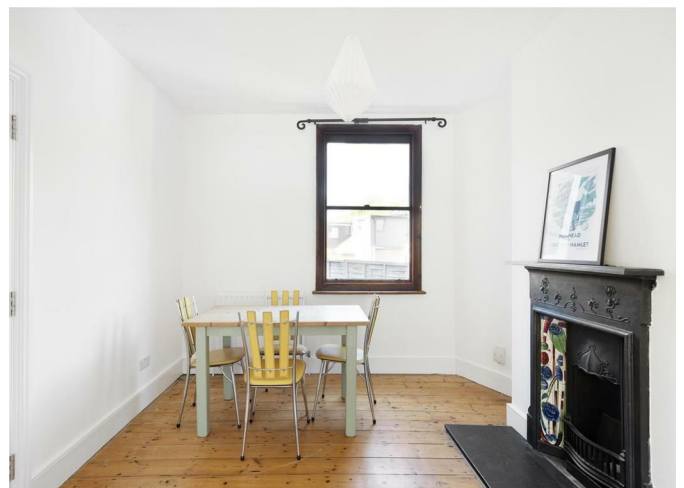
3



1



2







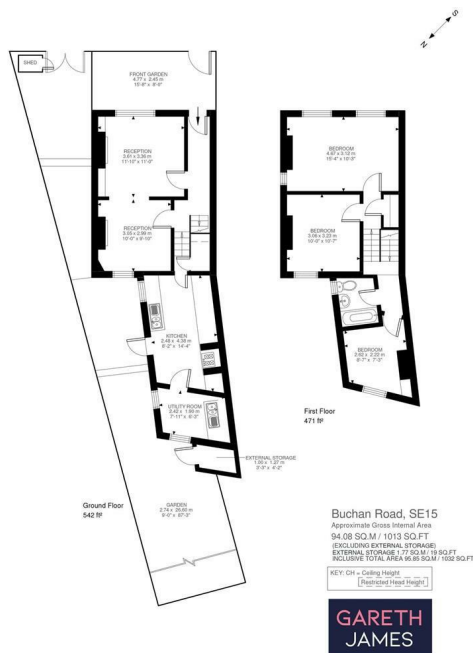


Illustration for identification purposes only. Not to scale.
 Floor Plan Drawn According To RICS Guidelines.



Energy Efficiency Rating		
	Current	Potential
Very energy efficient - lower running costs		
(92 plus) A		
(81-91) B		
(69-80) C		
(55-68) D		
(39-54) E		
(21-38) F		
(1-20) G		
Not energy efficient - higher running costs		
England & Wales	EU Directive 2002/91/EC	

Agents Note: Whilst every care has been taken to prepare these particulars, they are for guidance purposes only. All measurements are approximate and are for general guidance purposes only and whilst every care has been taken to ensure their accuracy, they should not be relied upon and potential buyers/tenants are advised to recheck the measurements

GARETH JAMES	OFFICE ADDRESS 129 Bellenden Road London SE15 4QY	OFFICE DETAILS 02077324330 sales@garethjames.com https://www.garethjames.com/